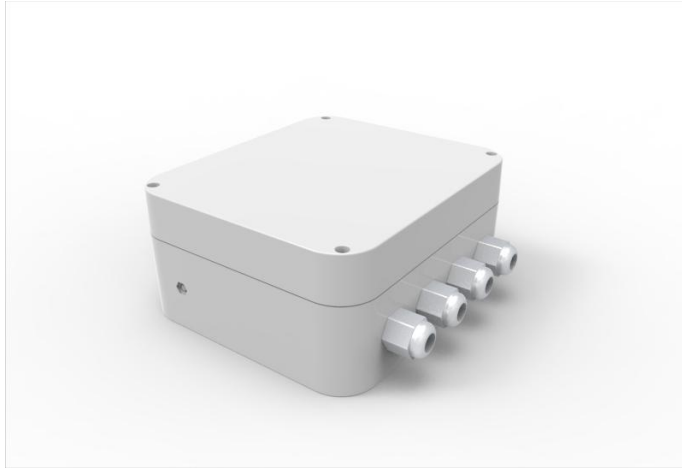


## RC04B Instruction



### SPECIFICATIONS

Water-resistant level: IP65

Dimension: 195mm x 195mm x 90mm

Weight: 3.8Kg

Input Voltage: 220~240V AC

Output Voltage: 12V AC

Working temperature: -40°C ~ +70°C

Working humidity: 10% ~ 90% RH

Range: Within 100 meters

### PACKING

RC04B Controller × 1

Remote emitter × 2

### GENERAL CHARACTERISTICS AND INFORMATION

RC04B is a controller used to operate the LED underwater lights using a remote control. The control range can be up to 100 meters according to the actual environment. There is a single-phase 220W step-down transformer that is used to lower voltage from 220V to 12V. This transformer is designed primarily for underwater pool and fountain lights. This transformer can be fixed for both new and old pools. There is a safety fuse inside. It is recommended **not** to install this unit more than 15 meters away from the pool. The manufacturer is not responsible in any circumstances for assembly, installation or start-up of any electric components that have been inserted or handled at locations other than its own premises

### INSTALLATION

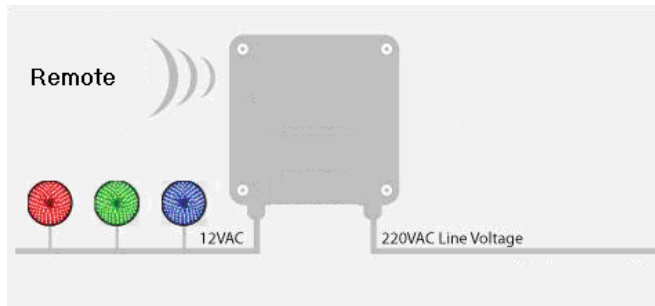
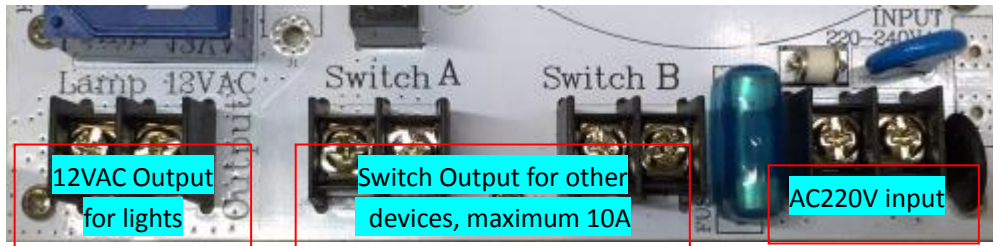
Prior to commencing, make sure there is no electricity passing through the wires and cables to be connected. Mount the transformer on a solid and secure wall at a minimum distance of 2 meters from any water source or pipes. Connect the 220V input voltage into the terminals clearly marked as **220V AC INPUT**. Connect the lamp cables to the terminals clearly marked as **LAMP 12VAC OUTPUT**. It is good practice to check and verify that there is a fuse inside the fuse carrier, and that it is functioning. It is essential to make sure the connections are as tight as possible in order to avoid

---

### IMPORTANT

This manual includes essential information on the safety measures to be implemented for installation and start-up. Therefore, the installer, as well as the user, must read these instructions before beginning installation and start-up. To achieve optimum performance, follow the instructions indicated below

sparking.

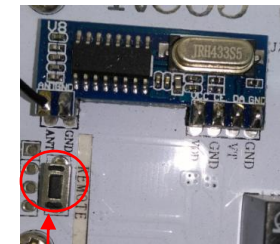


## MAINTENANCE

**FUSE:** In case the lamps suddenly stop working, check incoming and outgoing voltage. If there is 220V going into the transformer and no 12V coming out, check the fuse and replace if necessary. This is an indication that there was a spike in voltage that damaged the fuse.

**SPARKING:** In case of sparking and/or blackness around the connection terminals, scrape off all soot, reconnect cables and tighten as much as possible.

**REMOTE:** In case the remote control stops working or is replaced, there is a small button on the remote module inside the transformer, press this button for 1 second, and then immediately press one of the 4 buttons on the remote to pair both devices. The battery inside the remote may require replacement.



button

## OPERATION

Operate with a remote emitter

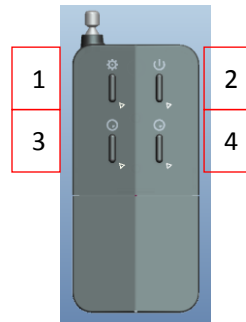
Button operation:

Button 1: switch to the next color program

Button 2: turns the lamps ON/OFF.

Button 3: turns ON/OFF switch A.

Button 4: turns ON/OFF switch B.



## SAFETY WARNINGS

The persons who are in charge of installation should have the required qualifications for this type of work.

Avoid making contact with the electric voltage.

Comply with the current standards regarding accident prevention.

IEC 364-7-702 standards must be observed: WIRING IN BUILDINGS, SPECIAL WIRING, SWIMMING POOLS.

Any maintenance works must be performed with the 220V incoming wire disconnected or switched off at the main supply.

Do not handle any electrical components with wet feet.